



Stabilimento / Plant
Via Bicocca, 14/C
40026 Imola (BO) - Italy
Tel. +39 0542 653441
Fax +39 0542 653601

castellini@castellini.com

Sede Legale ed Amministrativa / Headquarters
CEFLA s.c. - Via Selice Prov.le, 23/a
40026 Imola (BO) - Italy
Tel. +39 0542 653111
Fax +39 0542 653344

www.castellini.com



Hallmark of Excellence









A perfect combination of first-rate comfort and cutting-edge technology



Dentist's module

- to reposition instruments, it is enough to lightly touch the capacitive sensor inside the handle, move the module and release the handle to activate locking in the required module position
- the tube extension capacity and minimized instrument support arm height enhance the module positioning range without any risk of interference with the operating light
- optional end-of-stroke lock system for enhanced freedom of movement
- easy to handle, self-balanced instruments minimising operator wrist fatigue during use
- the tray holder, pivoting on an articulated arm, can be adjusted to any working position
- the large trans-thoracic tray holder can easily be reached by both the dentist and the assistant
- the dentist's module's extensive vertical work range facilitates suitable positioning to meet any working requirements

Dentist's side

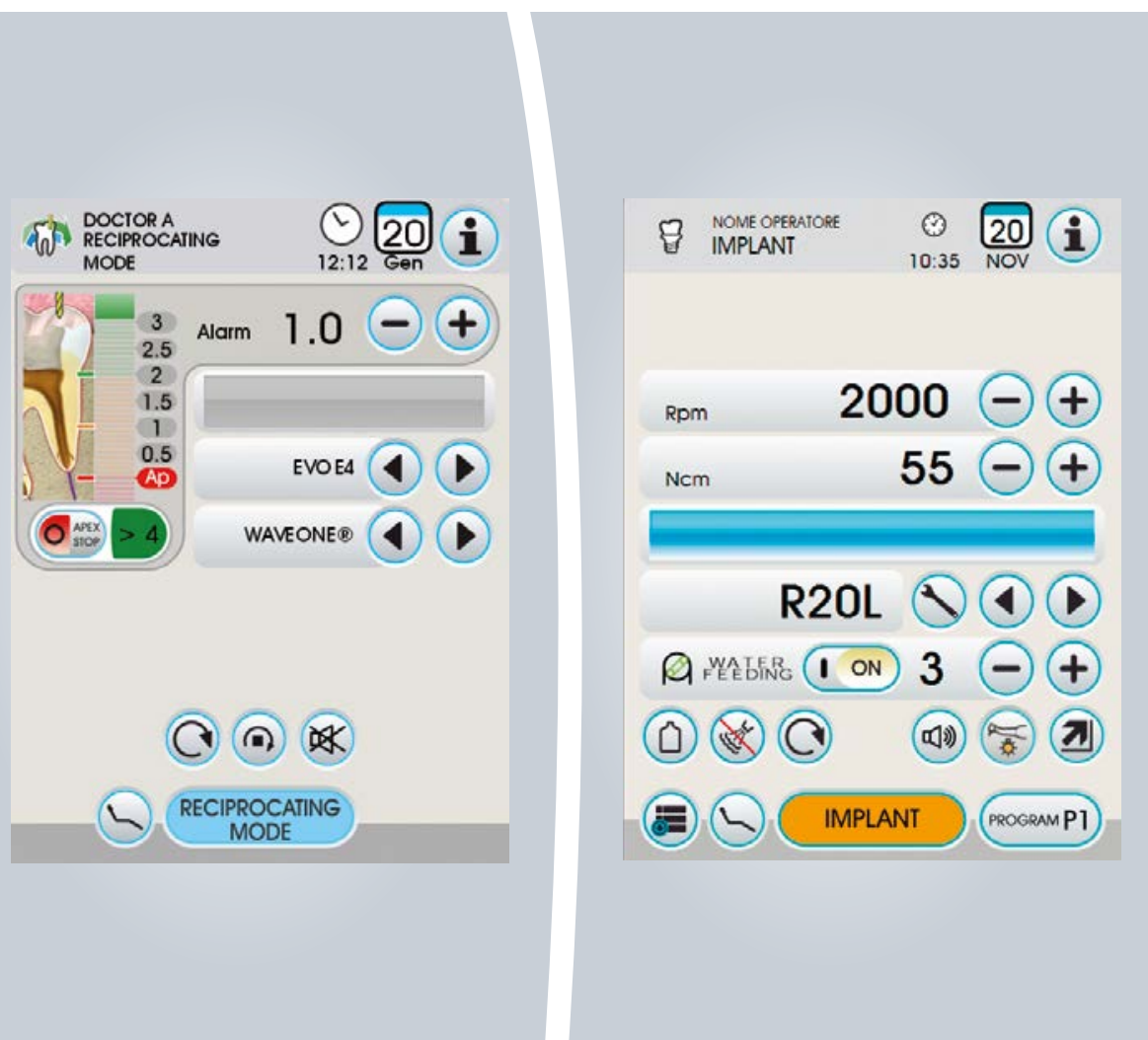


Freedom and precision

The Skema 8 work range is enhanced in both versions by its extensive-travel arms, allowing the operating ergonomics to adjust to each clinical situation with maximum efficiency. The excellent manoeuvrability of all dental unit elements helps maintain a correct, natural posture at all times, thus significantly reducing physical stress and fatigue during the course of the working day.

Comfort and confidence

On the hanging tubes module, the instruments are arranged in a functional manner to facilitate comfortable, easy pick-up and intuitive replacement in the holder. As a result, the work flow is fast and smooth. Moreover, the instruments remain outside the patient's field of vision to provide a more soothing, relaxed atmosphere.



Innate versatility

With the tap of a finger the micromotor becomes an advanced endodontics instrument: special functions such as torque control, reverse and autoreverse are always ready for use, as is an extensive library of endocanal files. Featuring a micromotor able to incorporate reciprocating mode movement, Skema 8 allows use of the special files. Endodontic files, reciprocating systems included, can be selected directly from the pre-loaded database.

Absolute safety

In implantology all the settings needed to complete each implant operating protocol precisely and safely can be personalised and recalled with ease: the software provides an outstanding level of interaction, allowing the dentist to set bur torque and speed parameters to match the employed contra-angle, control the peristaltic pump delivery rate and control all the other work modes that make implant site preparation and actual implantation easier.

Control panel



Intuitive control

The Full Touch display provides immediate information and fast control. Patient chair positioning, instrument spray mode, the operating light, automatic disinfection procedures, all these can be controlled simply by tapping on an icon, ensuring dentists enjoy unparalleled freedom to focus exclusively on their patients.

Outstanding clinical potential

Whatever the treatment being carried out, the Full Touch control panel lets dentists set and save the working parameters of each individual instrument with just a few taps of the finger, this is especially true of the LED Implantor micromotor which, thanks to this exciting new interface, is able to express its full all-round potential and so allow the dental surgery to expand its range of clinical treatment.

Full Touch also allows dentists to make all the clinical settings needed for safe use of the innovative ultrasound surgery handpiece, where included on the dentist's module.



Surgical functions

Skema 8 offers the perfect implantology configuration: Implantor LED induction micromotor, peristaltic pump integrated on the dentist's module and a cutting-edge control panel. Designed to smooth interaction with devices during treatment, the control panels let dentists personalise and save all parameters such as speed, torque and

peristaltic pump delivery rate quickly and easily, leaving them free to focus on the task at hand and the patient's wellbeing.

The control panel also allows equally efficient, simple management of the micromotor Endo mode: once again, all the settings (including the Normal, Reverse and Autoreverse functions) can be set and saved immediately.



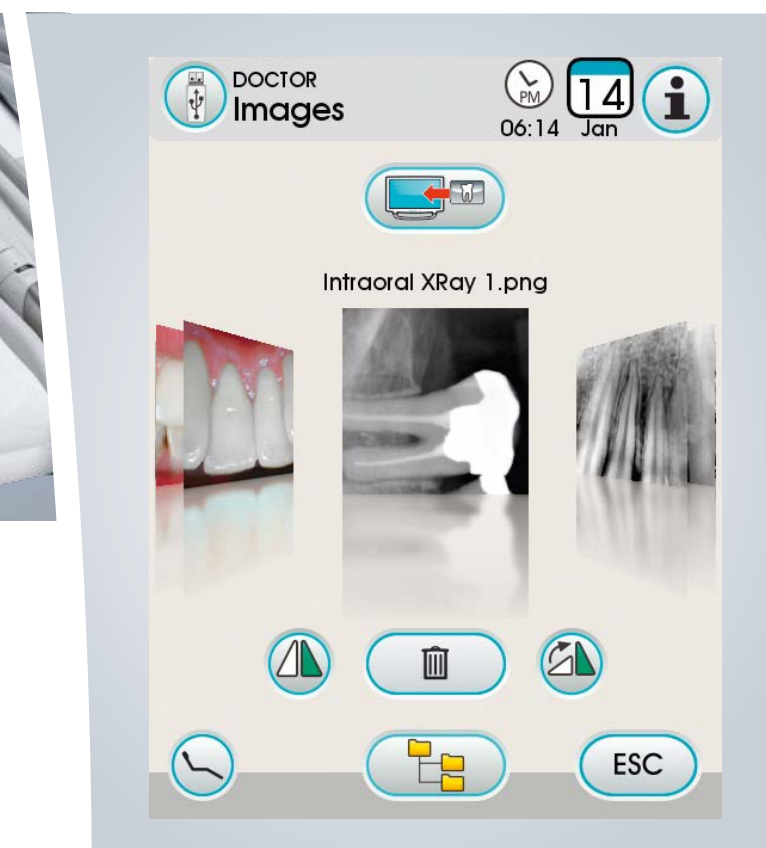
Advanced control

Highly advanced control means that dentists can focus exclusively on their work and their patients.

Full Touch is a large touch screen display (5.7"), made of tempered glass, it can be completely sanitised, offers excellent resistance to impact and scratching and, above all, provides fast user-friendly control of all dental unit functions.

The information shown on the Full Touch control panel can also be personalised: at the touch of a key dentists can choose between basic information or more advanced settings allowing more comprehensive personalisation of the way dynamic instruments and integrated hygiene system devices are used.

The new integrated X-ray sensor is IP67 certified. Available in two sizes and with a latest-generation CMOS receptor, it comes with a USB connection for greater versatility in the surgery.



Live Diagnosis

Based on a Linux platform and featuring a powerful latest-generation microprocessor, the Full Touch control panel offers several exclusive features: the ability to view X-rays in full-screen mode, manage certain graphic parameters, save them on a USB storage device or transfer them to an integrated monitor or connected PC.



LAEC

Integrated on the dentist's module, the Castellini Electronic Apex Locator offers maximum efficiency and clinical safety in endodontic treatments. With dedicated contra angle, positioning of the file during root canal treatment is shown on the display and, where the multimedia system is used, also on the dental unit monitor. When the apex distance threshold programmed by the operator is reached, the

LAEC will emit a warning tone. A large screen ensures that the procedure is displayed extremely clearly. (optional)

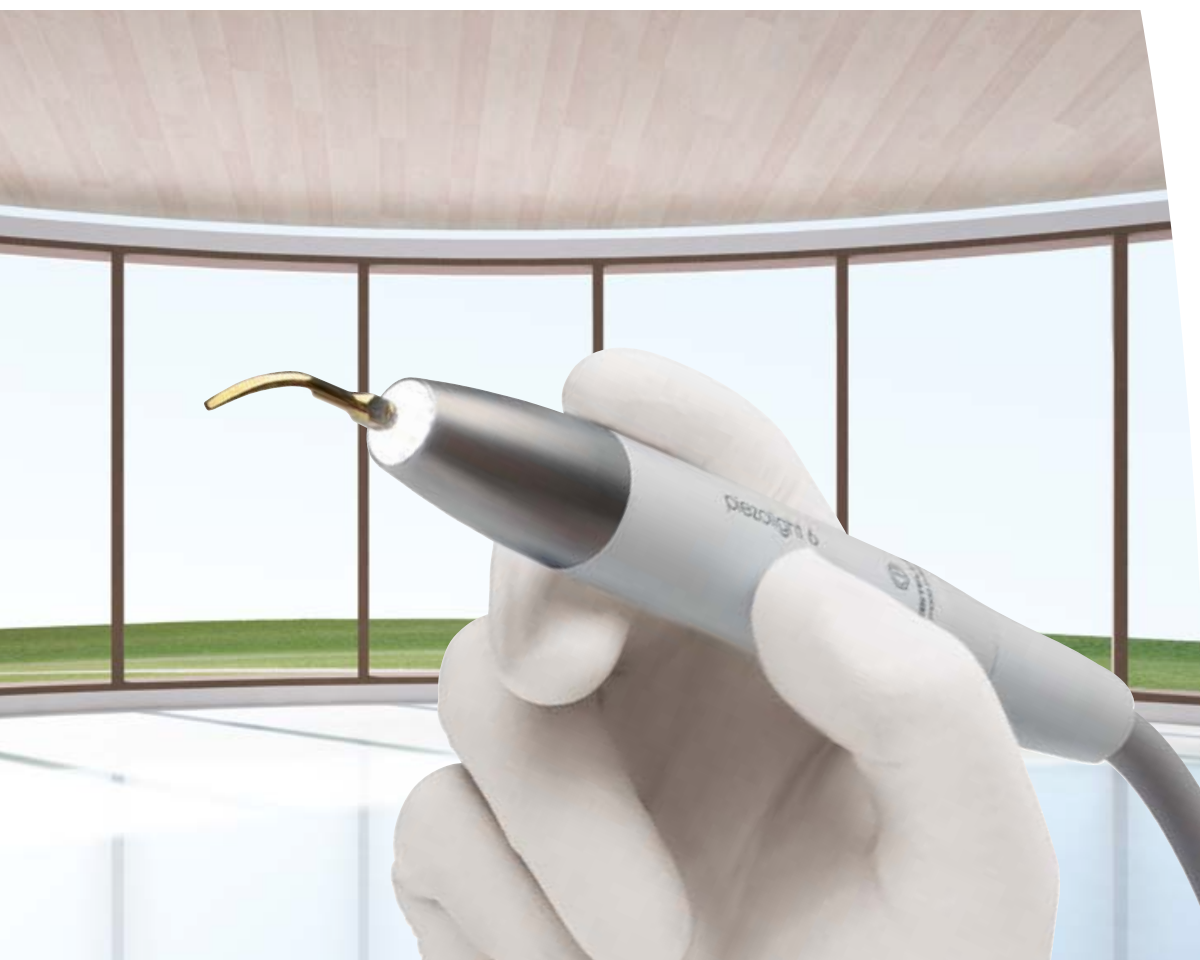


Implantor LED Micromotor

Latest-generation brushless micromotor, with its low-noise operation and minimal weight, Implantor LED is vibration-free and characterized by extremely high torque and outstanding reliability. Top performance for all specialist applications. Completely autoclavable.

Micromotor features:

- 100 up to 40,000 rpm with 1:1 ratio
- electronic torque control up to 5.3 Ncm
- possibility of pre-setting maximum speed



Piezosteril 6 / Piezolight 6

Versatile and multifunctional ultrasound handpieces suitable for prophylaxis, endodontics and periodontal procedures. Available with or without fibre optic for LED lighting, the handpieces offer the following performance:

- perfectly linear, controlled ultrasonic vibration (free from parasitic lateral vibration) with frequency constantly self-regulated according to load and tip condition

- extensive power adjustment range
- power is self-adjusting as a function of workload: this prevents heating of the handpiece or cooling liquids
- coolant delivery adjustable from zero to max flow rate
- completely autoclavable



T-LED

Lightweight, compact curing light with an exclusive design that allows use as both a direct version or 120° angled version.

- high power LED up to a maximum of 2,200 mW/cm²
- 430 - 490 nm emission band
- 6 pre-set programmes
- autoclavable light guide



Surgison 2

Ultrasound handpiece specially designed for oral surgery, implantology and osteotomy, available with an extensive range of special tips for any treatment requirements.

- directly interchangeable with the Piezolight 6 scaler, whereas instrument tubing has to be substituted for the Piezosteril 6 scaler. The Surgison 2 handpiece is always automatically detected and driven by the unit
- completely autoclavable
- the unit-integrated optional peristaltic pump ensures completely aseptic cooling by dedicated liquids



Assistant's module

- lightweight and handy, the suction cannulae are provided with roller housings
- easy and accurate vertical positioning of the module
- from the control panel, the patient chair movement, cup and bowl filling, operating light and Autosteril hygiene system activation can all be controlled
- the (optional) assistant's tray holder module is handily installed next to the assistant's module
- the cup and bowl filling units and the cuspidor bowl itself can be removed and disassembled to optimise hygiene procedures
- tray holder module available to replace the cuspidor bowl

Assistant's side



Motor-driven cuspidor bowl

The motor-driven ceramic cuspidor bowl rotates automatically reaching one of the pre-set positions and guaranteeing patient comfort during treatment. With its simple controls available on each instrument panel, the cuspidor bowl can then be returned to its stand-by position above the unit body.

Multifunctional ergonomics

The assistant's module on a dual articulated arm is height-adjustable and can be extended and folded to make more space available for the assistant whilst guaranteeing the greatest functionality in any (two- or four-handed) operating position. Five housings are available for the suction hoses and instruments.





The Patient Chair



Design in movement

The structural solidity of the Skema 8 is its patient chair, silent-running with fluid movements, powerful and reliable thanks to its hydraulic mechanism. It provides excellent patient comfort and, thanks to an extensive height adjustment range, can be placed at the ideal height whatever the operating circumstances. Movements can be managed directly or by using saved programs that include twelve working positions, rinse function, return to last working position and automatic reset. Backrest tilt is coordinated with the knee joint area to bring the patient into the Trendelenburg position. Asymmetric shaping of the lumbar area of the backrest and an offset backrest-seat joint provides the dentist with an unhindered approach to the patient.

Pneumatic headrest

The pneumatic headrest pivots on 3 axes to allow quick, precise positioning of the patient's head. The headrest can be released easily thanks to a button located at the bottom.



Seats

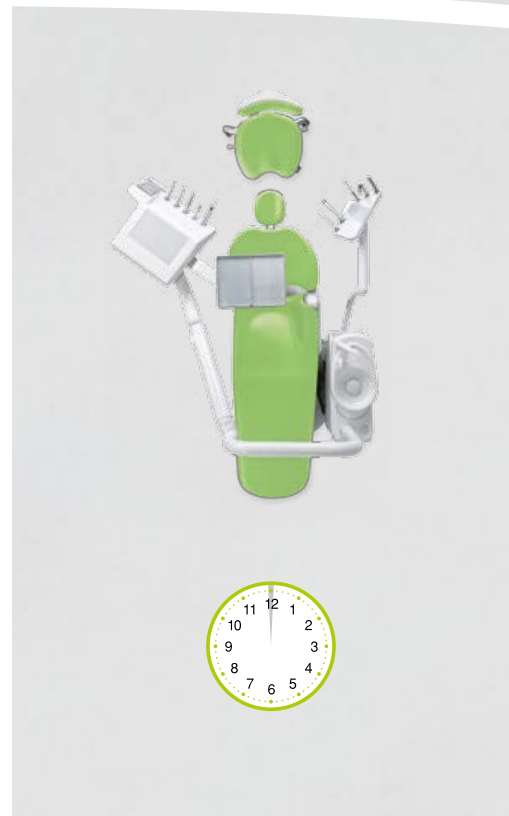
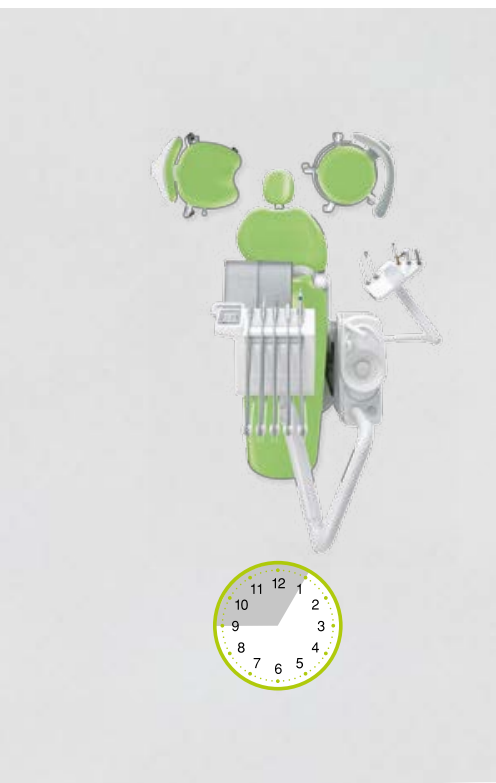
The exclusive C9 anatomical seat is designed to provide a physiologically correct, healthy working position: broad vertical excursion, adjustable thigh support, vertically and horizontally adjustable backrest with compensation system for continuous lumbar support. Also available to the medical team are the comfortable yet practical C7 and C8 seats.

Suction Stop device

Pressing the chair base causes temporary suspension of suction with the cannulae extracted. Both the backrest and base plate are equipped with a safety device that prevents any risk of crushing.

Sliding

The sliding function provides four key advantages: synchronised movement of the patient chair maintains patient comfort and keeps the distance ratios between operating zone and the two dental unit modules constant; it allows patient repositioning without having to move the operating light in that its beam remains pointed at the oral cavity; lastly, there is a much more easier-to-use space around the tilted backrest compared to that provided by a chair without the sliding function. All this is made possible thanks to the exclusive synchronized movement of seat and backrest: while the backrest is lowered, the seat slides forward and is raised.





Foot controls

The foot control range includes 6 models:

- ① Lateral slide Foot Control (wired/wireless)
- ② Pressure-operated Foot Control (wired/wireless)
- ③ Power Pedal Foot Control
- ④ Multifunction Foot Control

Being able to control multiple dental unit functions via the foot control demonstrates a conscientious approach to hygiene, one that has ensured the available foot-operated functions include:

- progressive instrument activation
- spray selection
- chip air/water activation
- patient chair direct/programmed movement control
- light on/off (available on multifunction foot control)
- freeze-frame camera

Both the lateral slide and the pressure-operated foot controls are available in the wireless version.

Because there are no wires the foot control can now be positioned as desired without creating any hindrance, allowing for more comfortable on-patient treatment.

Lithium batteries ensure that the unit can go more than two months between recharges, in any case it is supplied with a lead for fast connection to the dental unit so that recharging can also be carried out during work.

Peripheral devices incorporated on the dental unit



Venus LED

Operating lamp with long-lasting, low-consumption LED light source plus 3-axis rotation for perfect illumination of the operating area.

Technical features:

- maximum light intensity 50,000 Lux
- colour temperature: 5,000 K
- potentiometer to adjust light intensity
- No Touch sensor to switch on and adjust
- easy-to-clean hermetically sealed front protective screen
- handles can be cleaned in an autoclave

Venus Plus

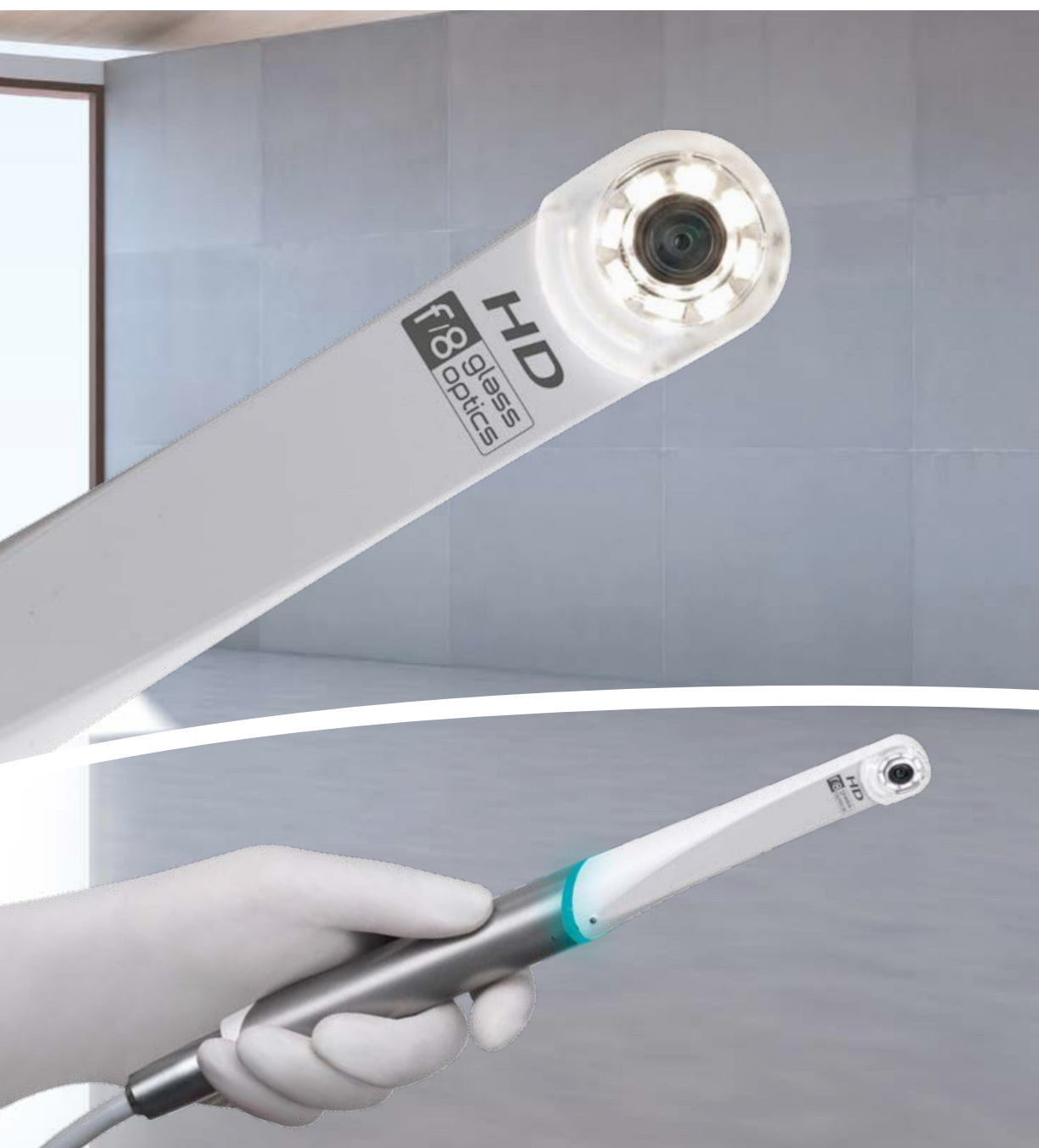
High performing operating light with rotation movement on three axes for accurate light adjustment to the oral cavity.

Technical features:

- colour temperature: 4,900 K
- adjustable light intensity from 8,000 to 35,000 Lux
- front protective screen
- removable handles suitable for cold-disinfection
- rear fan



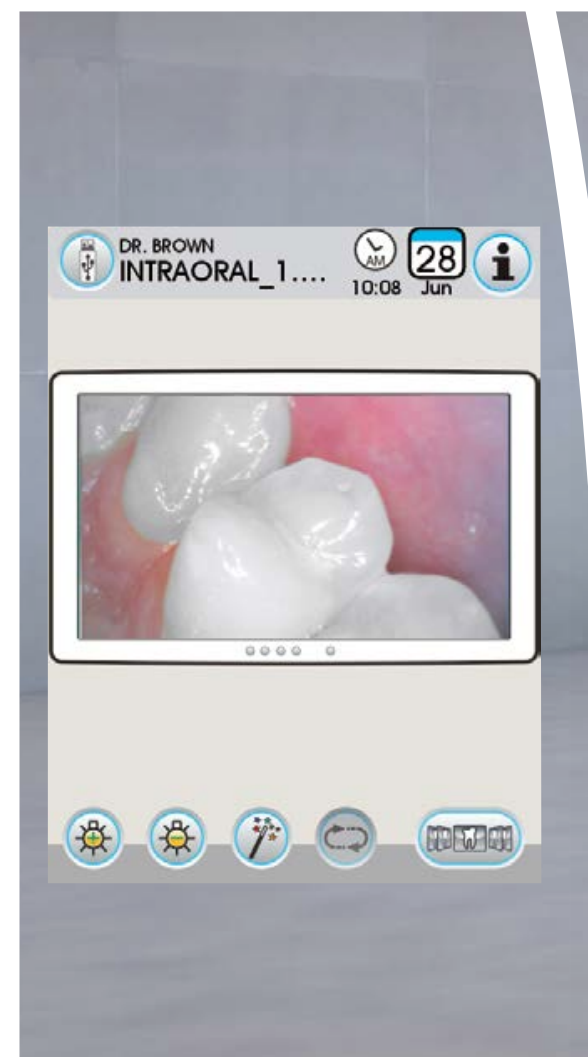
High-definition diagnostic potential



C-U2 HD camera

Featuring a system with 7 glass lenses and a 16:9 format HD sensor, the new incorporated video camera allows high definition images to be shown on the monitor directly without any distortion. Designed to give easy access to distal zones, the C-U2 is thin and has a partially retroflected 90° viewing angle. The extensive depth of field (from 5 to 70 mm) ensures outstanding image sharpness while the touch-sensitive key activates the freeze-frame without causing any vibration.

Multimedia System



PC connection

The monitor comes ready for connection to a PC via a lead or HDMI connector. On both versions a USB port provides a further connectivity option.



New Full Touch control panel functions now include viewing of HD images directly on the touch-screen display plus simplified management functions: zoom, contrast levels, colour adjustment and image rotation.

Integrated Medical Monitor

Mounted on the dental unit operating light column, the 22" LED monitor with 16:9 format, Medical Device 93/42-certified, is an excellent high-tech, ergonomic, image-based communication and diagnostic tool. Thanks to the special IPS panel, ensuring a wide viewing angle, images can be clearly seen from any position. Low-power LED light sources provide excellent contrast and bright colours, making images decidedly sharper.

Choosing a double-jointed arm lets dentists shift the monitor and position it within the treatment area. In addition to comfortable use, it also ensures greater involvement of the patient when sharing the outcome of treatment via on-screen imagery.



Hygiene conditions that ensure perfect safety



Hygiene systems

Supplied ready for the incorporation of scientifically proven hygiene devices, the Skema 8 design concept aims to minimise any risk of cross-contamination and is DVGW certified.

The A.C.A. spray anti-retraction system, supplied as standard on all dynamic instruments, prevents aspiration of any contaminants during the instrument stopping phase and prevents cross-contamination between patients.

Active hygiene devices



Autosteril A

Where used together with Peroxy Ag+, the Autosteril system (optional) provides automatic high-level disinfection of the spray water circuits, ensuring a mycobactericide, bactericide and anti-Legionella action, certified by the Sapienza University of Rome. It helps hygienisation at the end of a day's session and allows for short cycles to be carried out in the following steps:

- circuit draining with compressed air
- addition of 3% H₂O₂ to the spray water circuits
- 'hold time' allowed for liquid to work to intensive disinfection results
- liquid draining with compressed air
- (mains or distilled) water flushing

M.W.B.* - continuous disinfection system coupled to an air gap separation from mains water device in accordance with EN 1717

- 20 mm separation between mains water system and dental unit lines
- water titration with 0.06% H₂O₂

Peristaltic pump* - inbuilt system, necessary for oral surgery and implantology work with the Castellini instruments available on the dental unit

- Implantor LED Micromotor and Surgison 2 ultrasound Handpiece irrigation with normal saline solution

S.S.S. - independent supply to instruments

- 1.8 litre capacity pressurised tank
- external tank to facilitate replacement at any time

A.C.A. - spray anti-retraction system

- prevents contaminant suction during the instrument stopping phase
- minimises any patient cross-contamination risk

S.H.D.* - suction system hygiene procedure

- water flushing and hygienisation with a special liquid from a dedicated tank
- the duration of each cycle (approximately 1 minute) allows for hygienisation between patients

H.P.A.* - pneumatic supply hygienic protection via a device equipped with an autoclavable filter element

- allows for surgical use of the instruments

Time Flushing* - quick flushing of the dental unit body with mains water or separate supply water.

**optional*



Hygiene products recommended by Castellini

- Ster 1 Plus decontaminating detergent for surface applications
- Ster 3 Plus decontaminating detergent for surgical suction lines

Protection against Legionella and waterborne contaminants

The M.W.B. system, used in conjunction with Peroxy Ag+, acts against all waterborne contaminants, including Legionella. Moreover, tests carried out on dental units used in the surgery demonstrated, with regular use of the M.W.B. and daily execution of an intensive disinfection cycle with the Autosteril system, outstanding water hygiene quality, with bacterial loads kept at zero constantly over a 3-month observation period.

Passive hygiene systems

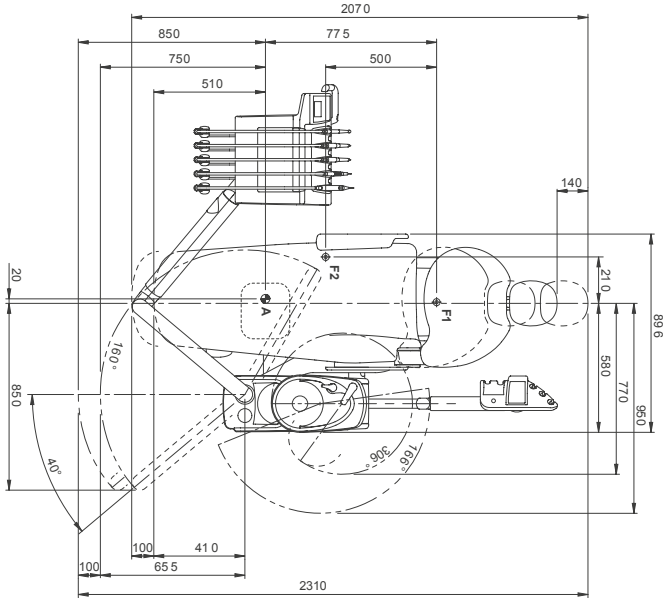
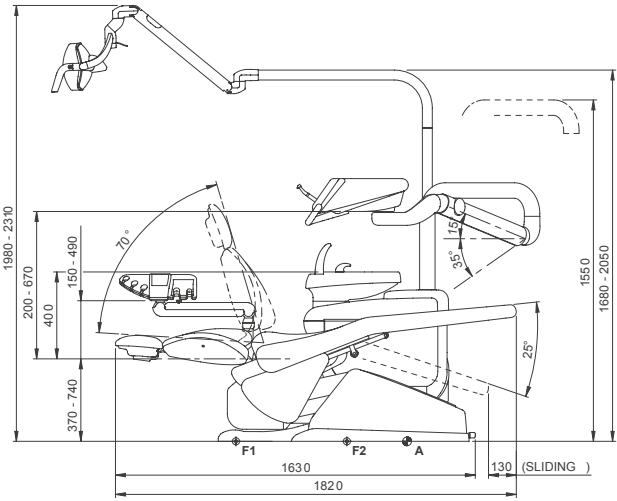


To maintain outstanding levels of hygiene on both the dental unit and in the workplace, Castellini has developed an advanced passive protection concept. Medical staff and patient alike can count on constant protection from numerous elements specifically designed to minimise any risk of contamination:

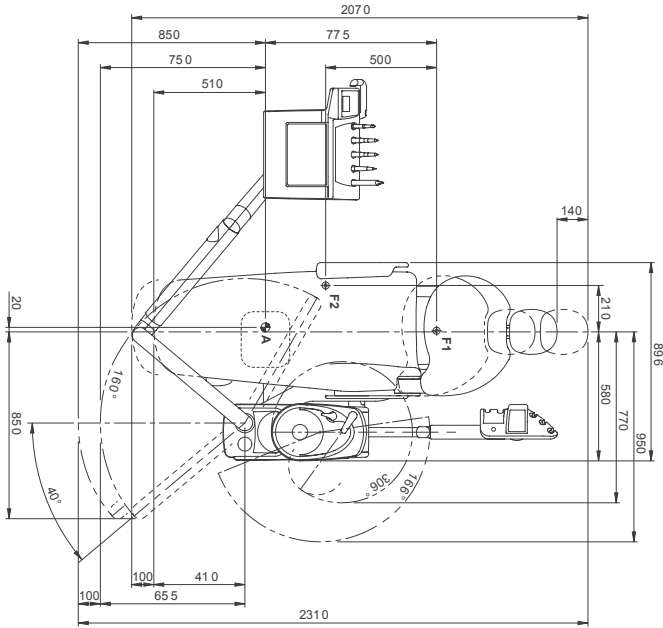
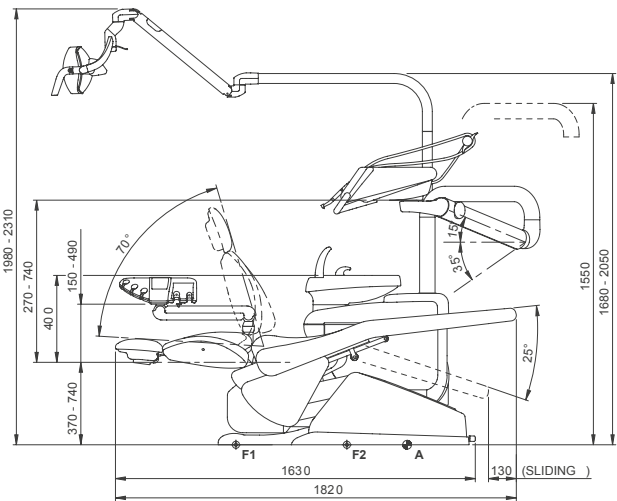
- removable autoclavable parts:
 - ceramic cuspidor bowl
 - cup-and-bowl-fill unit
 - silicone instrument support mat
 - cannulae holders

- scaler, Implantor LED micromotor and turbines are completely autoclavable
- syringe handle and tip are completely autoclavable
- removable, disinfectable dentist's module grip
- curing light with autoclavable light guide
- washable and disinfectable control panel with protective membrane
- removable, disinfectable suction tubing and slide guide
- unit and chair surfaces can be washed and disinfected
- seamless patient chair upholstery with antibacterial treatment

Skema 8



Skema 8 CP



	Over the patient delivery system	Hanging tubes
Hygiene systems		
Separate Supply System	●	●
Autosteril A (Automatic) for disinfection of the water circuit	○	○
Multi Water Bio controller. (EN 1717-compliant water infeed unit with continuous disinfection system)	○	○
Time Flushing (quick wash cycle of the water circuit)	○	○
Suction Hose Disinfection (wash and disinfection of suction system)	○	○
Peristaltic pump kit with saline solution irrigation set	○	○
Hi Protected Air (pneumatic feed filter)	○	○
Dentist's module		
Kit turbine complete with Silent Power Evo 4L fibre optics, quick coupling handpiece	●	●
Kit turbine complete with Silent Power Evo Miniature fibre optics, quick coupling handpiece	○	○
Induction Micromotor Implantor LED fibre optics kit (100 - 50,000 rpm - 5.3 Ncm)	●	●
Kit Piezosteril 6 scaler complete with 4 tips	○	○
Piezolight 6 scaler with fibre optics with 4 tips	○	○
Surgison 2 surgical ultrasonic kit	○	○
LAEC (Integrated Apex Locator)	○	○
T-LED curing light kit	○	○
Instrument lever stop kit	○	-
6-way stainless steel syringe kit	●	●
Transthoracic tray holder module	-	●
6 th instrument kit (curing light or camera handpiece)	○	○
Assistant's module		
T-LED curing light kit	○	○
3-way stainless steel syringe kit	○	○
6-way stainless steel syringe kit	○	○
Removable and disinfectable suction tubes	●	●
Removable and autoclavable suction cannulae	●	●
Assistant's module with keypad complete with control switch for chair, operating light mounted on self-balanced arm	●	●
Tray holder table on assistant's module	○	○
Operating light		
Venus Plus light	●	●
Venus LED light	○	○
Unit body		
Swivel and removable motor-driven bowl	●	●
Water-to-cup heater	○	○
Instrument spray heater	○	○
Air/water supply quick couplings for external devices	○	○
Multimedia cables and PC connections	●	●
Tray holder table in place of bowl	○	○
Patient chair		
Pneumatic release headrest with 3-axis movement	●	●
Multifunction foot control with Joystick	○	○
Pressure-operated foot control with Joystick and spray on/off kit	○	○
Pressure-operated foot control with Joystick and spray on/off kit, wireless	○	○
Foot control, Power Pedal type	○	○
Lateral slide foot control	●	●
Lateral slide wireless foot control	○	○
Left armrest	○	○
Right armrest	○	○

● = supplied as standard ○ = Optional - = Not available

Colour range

- 102 Atlantic blue

113 Pacific blue

106 Mediterranean blue

136 Indian blue

101 Caribbean green

123 Polynesian green

103 Nevada yellow
- 115 Scottish salmon

132 Blueberry violet

134 Japanese wisteria

135 Venetian red

130 Graphite black

121 Anthracite grey

137 Satin silver

102

113

106

136

101

123

103

115

132

134

135

130

121

137