

Technical Data

- CEI OCX 70-G tube
- 0.8 mm Focus (IEC 336)
- Total filtration min. 2.5 mm Al eq
- Anodic voltage 70 KV
- Anodic current 8 mA
- Power intake max 1.3 kVA
- Exposure time 0,03-1,61 seconds
- Power supply 230V 50Hz
- Distance between focus and skin 8" (20 cm)
- Arm extension 900/600/400 mm

CERTIFICATION IN CONFORMITY WITH THE FOLLOWING STANDARDS:

- CEI EN 60601-1-3 • CEI EN 60601-1
- CEI EN 60601-2-7 • CEI EN 60601-2-28
- CEI EN 60601-1-2 Electromagnetic compatibility
- Conformity with directive EEC 93/42



x-safe

RELIABILITY IN
DIAGNOSIS

Stabilimento / Plant
Via Bicocca, 14/C
40026 Imola (BO) - Italy
Tel. +39 0542 653441
Fax +39 0542 653601
castellini@castellini.com
www.castellini.com

Sede Legale ed Amministrativa / Head Quarter
CEFLA s.c. - Via Selice Prov.le, 23/a
40026 Imola (BO) - Italy
Tel. +39 0542 653111
Fax +39 0542 653344

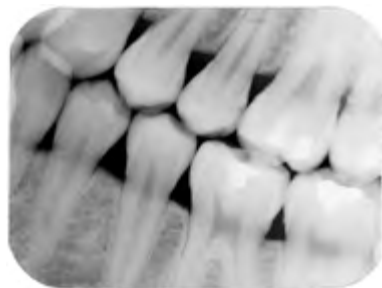


CASTELLINI

PASSION FOR DENTISTRY
SINCE 1935

TECHNOLOGY AND RELIABILITY

X-safe 70 has been designed to be an essential tool within the daily practice of radiography thanks to the reliability of the AC generator that uses tried and tested technology. X-safe 70 can be used for both film and digital images. The system is fully compatible with the sensitivity spectrum of all types of films and sensors on the market.



Precise diagnoses in safe conditions

X-safe 70 guarantees a constant level of x-ray quality, producing high-definition images which allow precise recognition of details and a perfectly balanced contrast. X-safe 70 offers the highest levels of safety for both the operator and the patient, ensuring:

- Extremely high levels of protection against leakage radiation
- Radiation beam limited to the sensitive plate surface only through the use of shielded template devices.



Simple and intuitive

The handheld control selector can be applied to the control unit directly or outside the dental surgery. Setting exposure times is immediate, precise and intuitive thanks to the following buttons:

- tooth selection
- patient's build selection
- digital sensor selection
- film sensitivity selection

The three-figure display shows the times set to one hundredth of a second.



Versatile, easy to handle and stable

X-safe 70 complements the ergonomic features of the surgery, thanks to the clean design of the articulated support arm with its wide operating range and excellent installation versatility. The head can be positioned with the highest levels of precision and simplicity in all operative situations, eliminating even the smallest vibration.

