

04/2015 CXRCOMGB151500

Due to our policy of constant technological upgrading, the technical specifications may be subject to change without prior notice.



XRADIUS
COMPACT

Stabilimento / Plant
Via Bicocca, 14/C
40026 Imola (BO) - Italy
Tel. +39 0542 653441
Fax +39 0542 653601

castellini@castellini.com

Sede Legale ed Amministrativa / Headquarters
CEFLA s.c. - Via Selice Prov.le, 23/a
40026 Imola (BO) - Italy
Tel. +39 0542 653111
Fax +39 0542 653344

www.castellini.com



The right dimension for panoramic imaging


CASTELLINI
PASSION FOR DENTISTRY SINCE 1935



X-RADIUS
COMPACT

Built to fit perfectly into any surgery, the new X-Radius Compact is a state-of-the-art, space-efficient panoramic imaging unit which offers a wealth of diagnostic programmes and is quick and easy to use, bringing you immediate benefits and day-to-day results.

Compact design for efficient diagnostics



Easy installation

With a minimal footprint, X-Radius Compact is also simple and inexpensive to install. Lightweight and easy to set up, calibration is also fast and full installation requires no more than a matter of hours before you are ready to run your first panoramic scan.

Diagnostics has its place in every surgery

An essential panoramic imaging unit requires an essential design. This is exactly what X-Radius Compact ensures, as well as ease of installation: it fits into the smallest of spaces, so any surgery environment will accommodate the latest in the range of Castellini digital imaging equipment.



Saves space and energy

Further to its space-efficient design, X-Radius Compact features an automatic stand-by function with immediate reactivation for reduced energy consumption.



Perfect positioning

Precision is attainable immediately thanks to a combination of the rigid support comprising 2 self-locking, lateral temple supports, a chin rest and bite, together with 3 laser guides for accurate alignment. 4 keys on the onboard panel allow for servo-assisted adjustments. The metal grips also help the patient maintain the correct position during the scan.

Technologies made to assist your performance

Centred around a concept of ultimate user-friendliness, X-Radius Compact provides a selection of technologies devised to ensure maximum ease of use. Ranging from laser guides to a rigid 4-point head support system, everything is implemented to facilitate frequent usage and stress-free operation.



Just press start to go

Once your patient is steady, you're ready to go. X-Radius Compact selects the optimal parameters based on each patient's personal morphology. Exposure settings are automatically adjusted according to patient type and the equipment programs itself to deliver a panoramic image with optimal focus.



Virtual control panel

Available also as an application which can be downloaded to iPad, the virtual control panel takes you through an easy procedure to select the examination type and allows you to view acquired images after scanning.



Temporomandibular joints

• Open & Closed mouth • Sagittal & Coronal



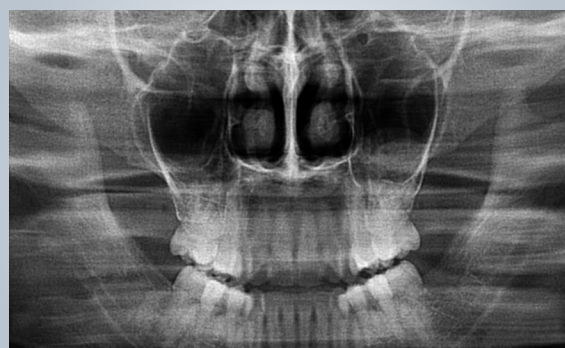
Bitewing Dentition

• Orthogonal • Right, Left & Frontal



Standard child panoramic imaging

• Rapid • Low dosage



Maxillary sinuses

• Frontal • Lateral

Obtaining immediate results saves time

Equipment which adapts to each diagnostic scenario and ensures accurate results in line with each of your specific needs is a sure way of economising on time.

The dedicated software features optimised filters to enhance image quality, the high signal-noise ratio vastly improves the clarity of clinical details and the automatically set parameters bring about the best possible images for clinical diagnosis.



Standard adult panoramic imaging

• Complete • Partial • Multilayer • Rapid

Ample choice of diagnostic capabilities

A total of 18 programmes to amply satisfy 2D diagnostic requirements in the dental surgery. X-Radius Compact provides a comprehensive range of examination types also covering bitewing dentition with improved orthogonality, temporomandibular joints and maxillary sinuses.

Low dosage

A higher-speed scanning function is available to ensure children are exposed to inferior dosage. This can also be used for fast, post-therapy scans to assess treatment outcome.

Dynamic focus

X-Radius Compact registers 5 different image sets with a single scan, so that you can select the best focal range to suit the requirements of the treatment plan.

Image management across a unique platform

Thanks to an open platform, image management and data sharing is easy and highly practical. Imaging software covering intra-oral and extra-oral applications with an intuitive interface allows dentists to transfer data to third-party systems via DICOM protocols and other methods. Acquired images can also be transferred to compatible management software with a standard TWAIN protocol.



Remote control

Available both for WINDOWS and as iPad application, the virtual control panel enables remote control of the equipment and onscreen visualisation of the images acquired.

Technical specifications

2D IMAGING

Type

Adult and child panoramic imager, QuickPAN, MultiPAN, "Bitewing" Dentition, PA and LL maxillary sinuses (Right and left), Temporomandibular Joint (2 x LL +2 x PA) Open and Closed Mouth

Patient Alignment 3 Laser Guides

Sensor Technology CMOS (CSI)

Dimension PAN standard 15 cm x 28 cm

Image file size max 7.5 MB

Image resolution 5 to 7 lpmm

Dynamic range 14 bit (16383 Gray levels)

Enlargement 1.2 - 1.3

Exposure time 3-12 s

Typically effective dose (ICRP 103) PAN (6.7 μ Sv)

X-RAY GENERATOR

Type of generator Constant potential (DC)

Anode voltage 60 kV - 85 kV (step 1kV)

Anodic current 4 mA - 15 mA

Focal spot 0.5 mm (IEC 60336)

Inherent filtration > 2.5 mm Al eq. (a 85 kV)

Exposure control Automatic. MRT

(Morphology Recognition Technology)

Duty cycle 1:20 at full power operation (85kV, 12mA)

POWER SUPPLY

Voltage/Frequency

115 - 240 Vac, \pm 10% single phase 150 / 60 Hz \pm 2 Hz

Maximum current temporary peak absorption

20A at 115V, 12A at 240V

Current consumption in standby mode maximum 0.5 A

Note Automatic voltage and frequency adaptation

DIMENSIONS

Required minimum 872 mm (L) x 1101 mm (D)

Packaging dimensions (L) x (P) x (H) in mm

Supplied in 2 boxes: Box 1: 930x690x960

Box 2: 1860x355x350

Weight 70 kg (154lb) 84 kg (185lb)

Adjustable height 2 speeds motorised

Note Self-supporting base available

CONNECTIVITY

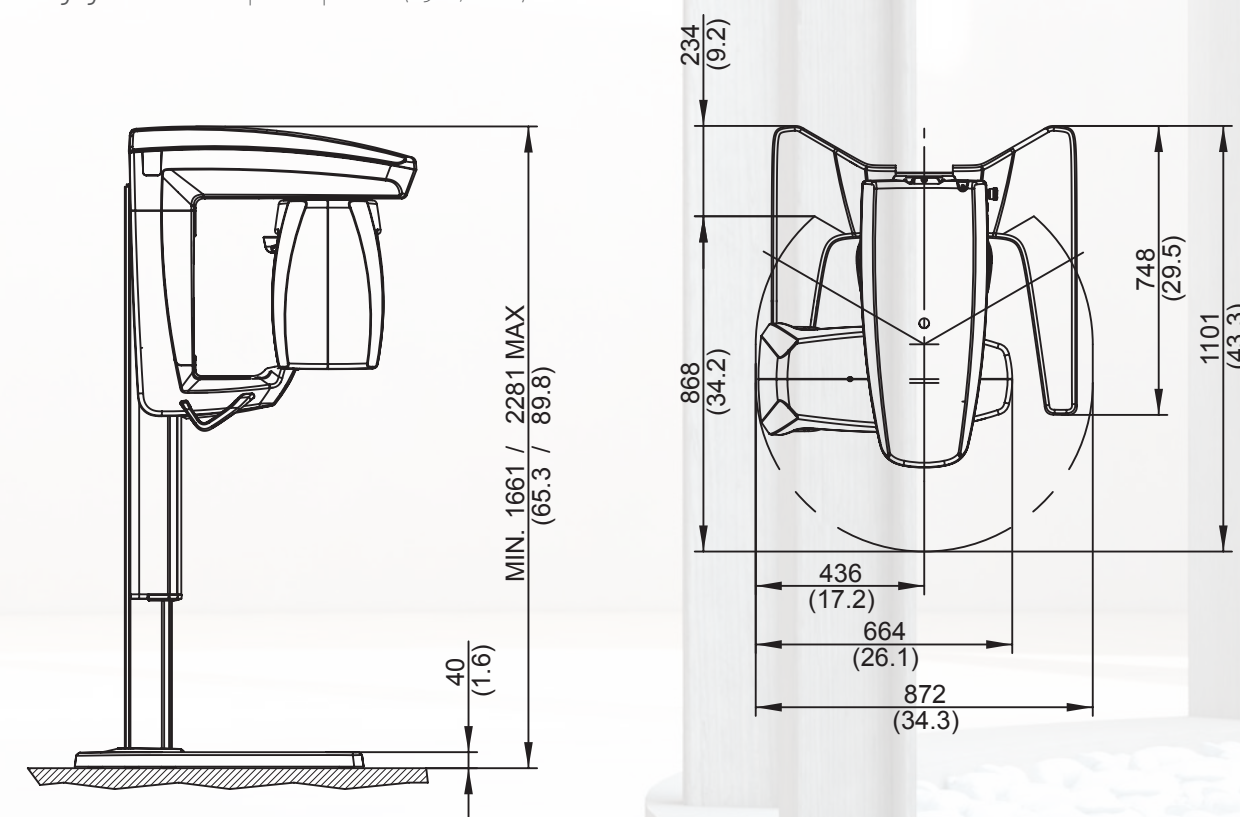
Connections LAN / Ethernet

Software iRYS

Supported protocols DICOM 3.0, TWAIN, VDDS

DICOM nodes IHE certification (Print, Storage Commitment,

WorkList MPPS, Query Retrieve)



dimensions in millimetres (dimensions in inches)