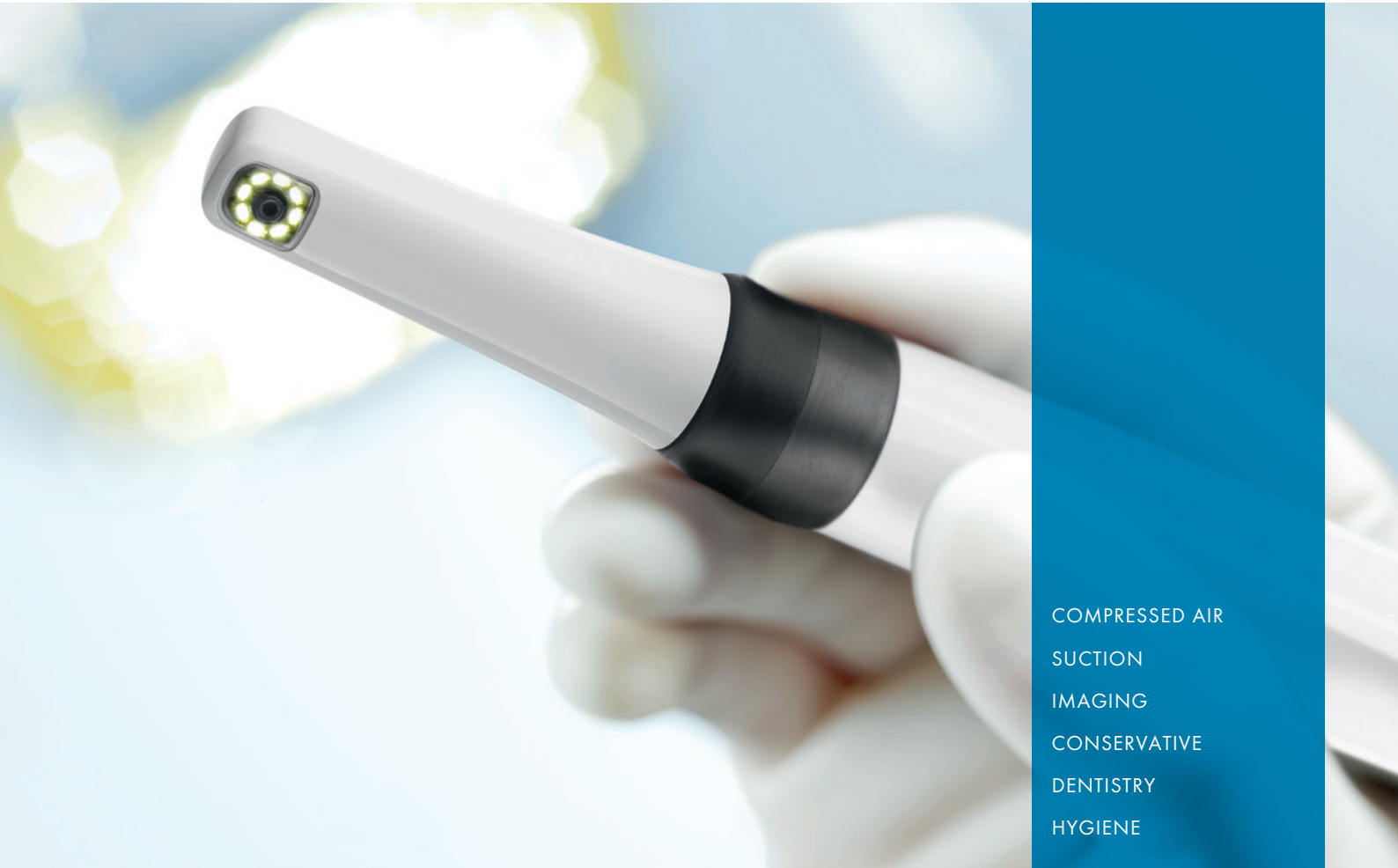


VistaCam iX – brilliant images and excellent caries diagnostics

Top-quality intraoral and fluorescent images with macro function (new)



COMPRESSED AIR
SUCTION
IMAGING
CONSERVATIVE
DENTISTRY
HYGIENE



reddot design award
winner 2011



Focus Open
Gold 2011



Designpreis
Deutschland
2012
NOMINIERT



VistaCam iX – one camera, numerous possibilities

Communication with patients, caries diagnostics, documentation – all in one.

Camera systems from Dürr Dental provide valuable support for dental treatment and help the patient to understand why the treatment is necessary. VistaCam iX sets new standards here.

The advantages of the new VistaCam iX

Dürr Dental has brought together successful, tried-and-tested technologies to create the VistaCam iX. With regard to depth of field and image quality, the intraoral camera meets the highest requirements for fully digital image transmission. The sophisticated interchangeable head mechanism provides the best prerequisites for all applications. Whether users require macro or intraoral images, the VistaCam iX supports them - even in the diagnosis of caries. In the DBSWIN imaging software, caries and plaque filters show caries activity using a colour scale with a numerical evaluation of between 0 and 3. This makes the system ideal for the early detection of caries and the visualization of plaque. In spring 2012, a curing light head will be added to the existing range of camera heads.

Beautifully shaped

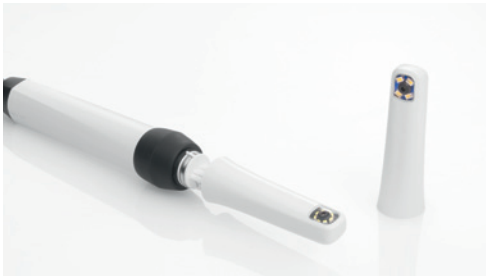
The VistaCam iX is not only characterized by its functions; in addition, it meets all requirements pertaining to ergonomics. Among other awards, it has achieved the renowned "IF product design award 2011" and is "red dot design award winner 2011". Moreover, it can be used in practically all types of surgery – even as a stand-alone version with no PC. Further advantages: Thanks to the option of decoupling the system directly on the handpiece, the VistaCam iX is the perfect multi-user solution. A motion sensor that switches the camera on and off ensures efficiency.



Images and video clips can be used flexibly in discussions with patients. This makes treatment understandable and transparent.

Possible applications at a glance

Simple interchangeable head principle



360° all-round capture ring

Multi-user capable

Automatic activation/deactivation

Fully digital data transmission



1

Cam interchangeable head for top-quality intraoral images

- Top-quality intraoral images
- Optimized, homogenous illumination
- Video clip function

2



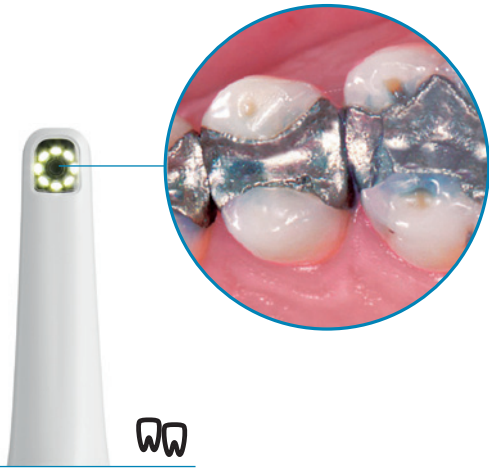
red dot design award
winner 2011



Focus Open
Gold 2011



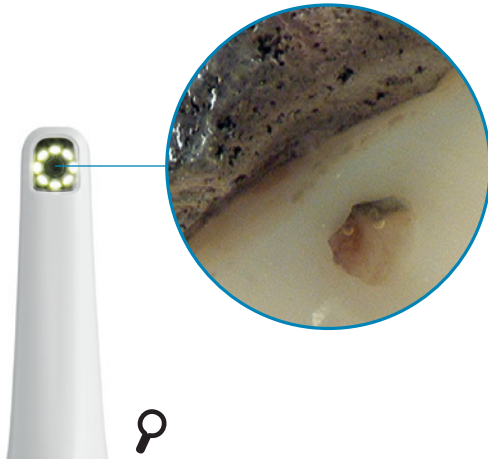
4



WW

Macro interchangeable head for
top-quality high-zoom images
(11/2011)

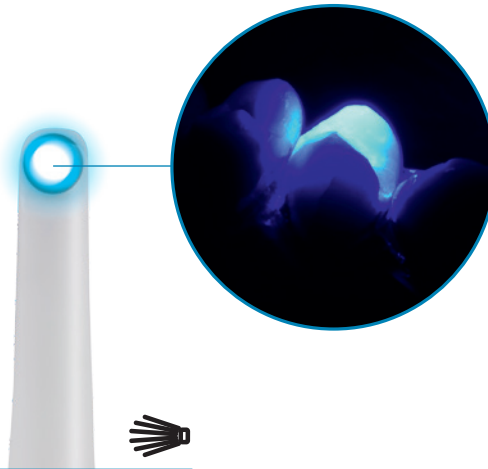
- 100x zoom



P

Poly interchangeable head for light curing
(from spring 2012)

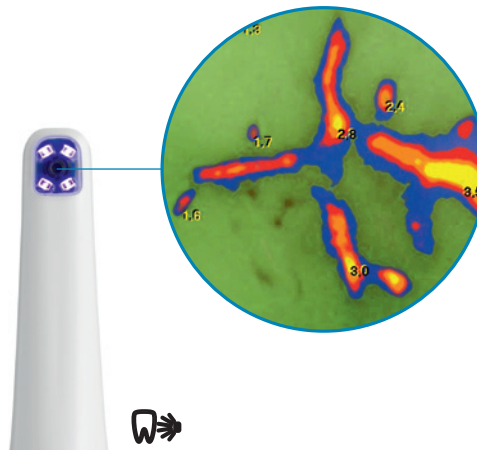
- For the polymerisation of all
current curing dental materials
- With modern LED technology and
soft start function



W

The interchangeable Proof head makes caries and plaque
visible

- Software analysis for the detection of caries lesions and
visualisation of plaque by means of fluorescence
- The violet light of the LEDs excites the metabolic products
of caries-producing bacteria



W

Caries findings are
displayed on the screen
using a colour scale that
ranges from green to
yellow - supplemented
by a numerical evalua-
tion between 1 and 3.

0 - 1,0	Healthy tooth enamel
1.0 - 1.5	Early-stage enamel caries
1.5 - 2.0	Deep enamel caries
2.0 - 2.5	Dentine caries
2.5 - >3.0	Deep Dentine caries

More versatile than ever!

Cam

1



Proof

2



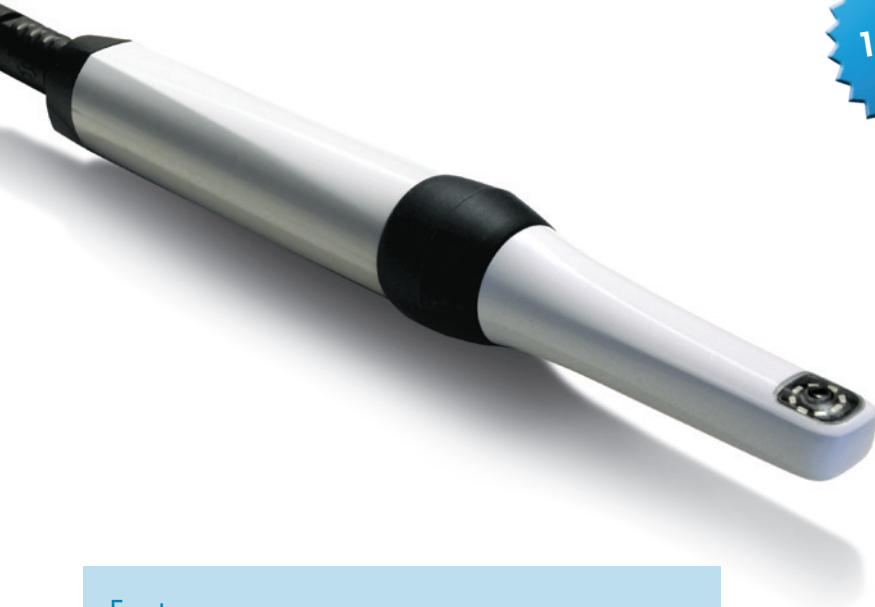
Macro

3



Poly

4



Features:

- Top-quality intraoral images
- Software analysis for the detection of caries lesions and visualisation of plaque by means of fluorescence
- DBSWIN saves the images as pictures or videos
- Ergonomic 360° capture ring
- Fully digital data transmission
- Freeze frame module and possibility of saving images to a USB stick (stand-alone version)

The technology at a glance

Technical Data	VistaCam iX PC Version	VistaCam iX Stand-alone version
Connections	USB 2.0	Base station with HDMI/DVI connection
Freeze frame module	Via PC/laptop	12 images/possible storage on USB stick
Multi-user application	Plug&Play, cable can be connected to handpiece	Base station for each additional workstation
Triggering/activation	Handpiece (optional foot pedal)	Handpiece (optional foot pedal)
Weight of handpiece (g)	50 (without cable)	50 (without cable)
Handpiece length (mm)	190	190
Power supply	USB (5V)	Base station power unit (12V)
Transmission path	USB 2.0, via cable (2.5 m)	USB 2.0, via cable (2.5 m)
Image presentation	True-sided or reversed, can be set using PC/laptop	True-sided or reversed, can be set using base station

	Cam interchangeable head	Macro interchangeable head	Proof interchangeable head
Resolution (pixels)	470,000	470,000	470,000
Object distance (mm)	5–35 (depth of field = 30 mm)	2 (100x zoom)	10 fixed, with spacers
Lighting	8 LEDs (white)	8 LEDs (white)	4 LEDs (405 nm, violet)
Optical system	Glass lens, tempered	Glass lens, tempered	Glass lens, tempered



17" TFT monitor



Stand-alone version



Disposable protective sheath



DÜRR DENTAL AG
Höfigheimer Strasse 17
D-74321 Bietigheim-Bissingen
Germany
www.duerr.de
info@duerr.de

